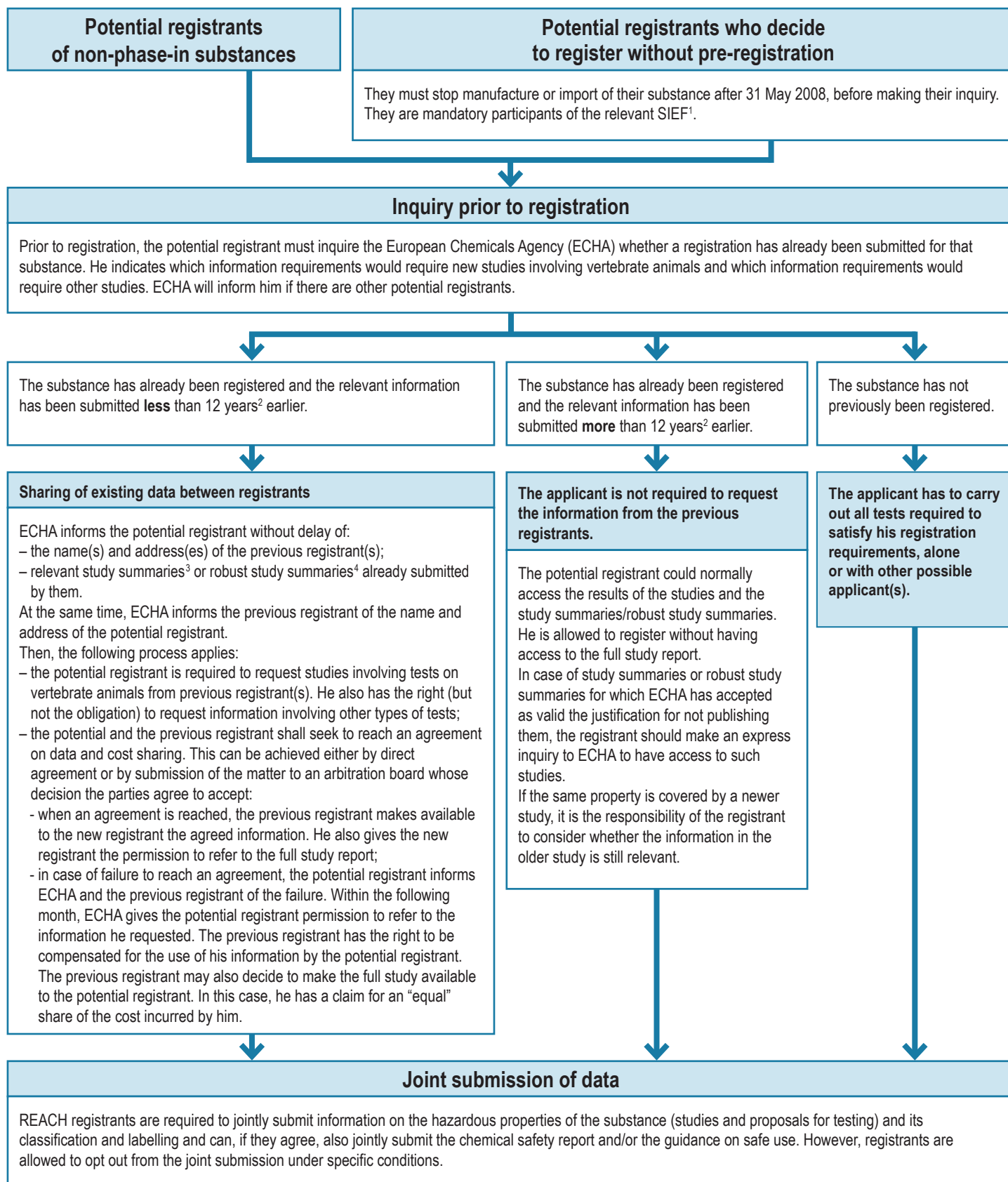


Data sharing under REACH for non-phase-in substances and not pre-registered substances

The inquiry process



1. SIEF: Substance Information Exchange Forum. 2. The 12 year period starts running from the moment when the information was submitted to the relevant authorities. This means that, when the information has been submitted after the original registration (for instance, following an update), the 12 year period extends beyond 12 years after the registration date.

3. Study summary: a summary of the objectives, methods, results and conclusions of a full study report providing sufficient information to make an assessment of the relevance of the study. 4. Robust study summary: a detailed summary of the objectives, methods, results and conclusions of a full study report providing sufficient information to make an independent assessment of the study minimising the need to consult the full study report.